



FRENCH SCHOOL
IN LYON



French immersion courses

And online

2023 Prices



Lyon Bleu International, a school of the KLF network - Keep Learning French
82, rue Duguesclin 69006 Lyon - France
contact@lyon-bleu.fr - +33 437 480 026 - lyon-bleu.fr

Welcome to Lyon



SUMMARY



CONTENTS


PAGE

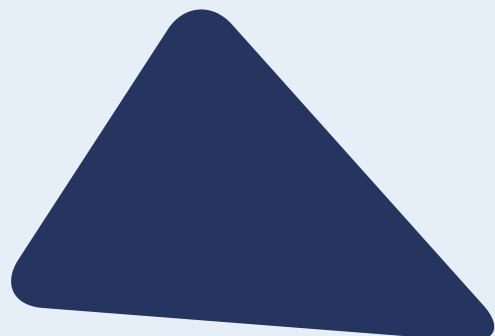
| | |
|--------------------------------------------------|----|
| • Our French Programmes - Group Courses | 4 |
| • Options to add to one of our French programmes | 5 |
| • Other options | 6 |
| • Accommodation and Transfers | 8 |
| • 2023 Calendar | 10 |
| • Reminder of the general conditions of sale | 11 |



Compose your training programme according to your needs and desires

- 1 Choose a General French course: **«Essential», «Standard» or «Intensive».**
- 2 Add, if necessary, **options** to suit your project.
- 3 Opt for **«thematic courses, workshops or additional services»** according to your wishes.

| | |
|------------------------------------|-------------------------------------------------------------------------------------------------------------------------|
| € FROM 135€ / week |  DURATION OF A COURSE 45 MINUTES |
| |  STUDENTS MAX / CLASS 14 |
| | € REGISTRATION FEES 80 € |
| |  MORNING AND/OR AFTERNOON CLASSES |



1

OUR FRENCH PROGRAMMES - GROUP COURSES

Choose a general French course

| | Programme ESSENTIAL | Programme STANDARD | Programme INTENSIVE | Programme SUPER INTENSIVE |
|---------------------------------|-------------------------------|------------------------------|-------------------------------|------------------------------------------------------|
| General French lessons | 15 | 15 | 15 | 30 |
| General French workshops | - | 6 | 10 | 10 |
| TOTAL LESSONS/WEEK | 15 | 21 | 25 | 40 |
| FROM | 135 € | 170 € | 200 € | - |
| Included in the training | | | | |
| Tutorat | ✓ | ✓ | ✓ | ✓ |
| KLF mobile app | ✓ | ✓ | ✓ | ✓ |
| Student Roadbook | ✓ | ✓ | ✓ | ✓ |
| Prices per week | | | | |
| From 1 to 4 week(s) | 165 € | 220 € | 250 € | Available only in our schools in Toulouse and Annecy |
| From 5 to 12 weeks | 155 € | 210 € | 240 € | |
| From 13 to 24 weeks | 145 € | 195 € | 215 € | |
| 25+ weeks | 135 € | 170 € | 200 € | |

⚠ Complete beginners: 2 week INTENSIVE programme before you can sign up for any other programme. See calendar for specific session dates.



2

OPTIONS TO ADD TO ONE OF OUR FRENCH PROGRAMMES

Programme
ESSENTIAL

or

Programme
STANDARD

or

Programme
INTENSIVE

+

Private courses

General French

French exam preparation

French for business

5 private lessons
(per week)

240 €

275 €

10 private lessons
(per week)

450 €

500 €

e-Learning platform option

Go further and opt for our French e-Learning platform on specific modules (24-hour access)

Per week

KLF e-Learning platform

10 €

KLF e-Learning platform (exam preparation)

25 €



3

OTHER OPTIONS

Long stays (semester)

Intensive 15-week course

2 790 €

Intensive 30-week course

5 500 €

Set dates 2023: 09/01, 08/05, 04/09

Online group course (12 weeks)

4 lessons per week - Tuesday and Thursday from 6pm to 7.30pm

360 €

University preparation (individual)

5 individual lessons + 5 independent lessons / week

2 weeks

480 €

4 weeks

880 €

6 weeks

1 260 €

8 weeks

1 680 €

Training for French teachers

Year program
(21 lessons per week)

385 € / week

Thematic internships
(25 lessons per week)

415 € / week

Set dates 2023: 20/03, 05/06, 10/07, 17/07, 24/07, 31/07, 07/08, 14/08, 16/10

BILDUNGSURLAUB

**BILDUNGSUR-
LAUB 1**

**BILDUNGSUR-
LAUB 2**

**BILDUNGSUR-
LAUB 3**

**BILDUNGSUR-
LAUB 4**

Programme **INTENSIVE**

+

5 tut. / week

260 €

(Berlin, Brandenburg,
Bremen, Hamburg,
Rheinland-Pfalz,
Thuringen)

5 tut. / week
1 cult. Act. / week

270 €

(Saarland)

10 tut. / week
2 cult. Act. / week

280 €

(Baden-Württemberg,
Hessen, Niedersachsen)

5 ind. lessons /
week 5 tut. / week
4 cult. Act. / week

495 €

(Schleswig Holstein)

(for workers in Germany)

French & Culture

A2 level minimum
recommended

**Essential programme
+ cultural programme**
(1 week only)

300 € / week

Set dates 2023: 17/04, 22/05,
12/06, 17/07, 21/08, 18/09, 09/10



Optional

**Choose an accommodation
and book a transfer
on next page**

Host family *

| | 1 to 6 weeks | 7 to 12 weeks | 13+ weeks | Extra night |
|---------------------|--------------|---------------|-----------|-------------|
| Room and breakfast | 145 € | 140 € | 135 € | 25 € |
| Room and half board | 205 € | 200 € | 195 € | 35 € |

* For any request for more than 2 additional nights, the whole week is due. Arrivals in host families are on Sunday and departures on Saturday, any extra night is payable.

STUDIO - Short stay residences

Séjours et Affaires Group* - 2 stars

Residence Saxe-Gambetta - Residence St Nicolas

Studio (max 2 pers.)

Large studio in Saxe Gambetta (max 3 pers.)
Two rooms in Saint Nicolas (max 4 pers.)

From 4 to 6 nights

52 € / night

62 € / night

From 7 to 27 nights

44 € / night

53 € / night

From 28 nights

38 € / night

45 € / night

Séjours et Affaires Group* - 3 stars

Residhome Appart Hotel Lyon Gerland

Studio (max 2 pers.)

Two rooms (max 4 pers.) The two rooms include: a living room with bedding, an office area, a separate bedroom, a fully equipped kitchen (hotplates, fridge, microwave and crockery), a shower room, and a television.

From 1 to 4 nights

86 € / night

101 € / night

From 5 to 27 nights

74 € / night

87 € / night

From 28 nights

59 € / night

69 € / night

Citadines Group - 3 stars

Residence Part Dieu*

Studio Deluxe (max 2 pers.) 25m², double bed or twin beds

2-room flat (max 4 pers.) 37m², double bed or twin beds and sofa bed in the living room

From 1 to 6 nights

99 € / night

129 € / night

From 7 to 29 nights

84 € / night

110 € / night

From 30 nights

73 € / night

90 € / night

Citadines Group - 4 stars

Residence Presqu'île

Studio Basic (max 2 pers.) 25m², double bed or twin beds, without air conditioning

Studio Deluxe (max 2 pers.) 25m², double bed or twin beds, with air conditioning

2-room flat (max 4 pers.) 38m², double bed or twin beds and sofa bed in the living room, without air conditioning

2-room flat (max 4 pers.) 38m², double bed or twin beds and sofa bed in the living room + air conditioning + courtesy tray

From 1 to 6 nights

108 € / night

118 € / night

138 € / night

149 € / night

From 7 to 29 nights

92 € / night

100 € / night

117 € / night

127 € / night

From 30 nights

78 € / night

85 € / night

99 € / night

105 € / night

*+ tourist tax, currently 1,65€/night/person (changeable at any time of the year)

STUDIO - Medium stay residences *

Residences

Individual studio (about 18m²)

UNIVERS STUDIO & CAMPUS PARC - 69100 Villeurbanne

LE MICHEL-ANGE - 69007 Lyon

LES STUDIOS LUMIÈRE - 69008 Lyon

LE VICTOR HUGO - 69002 Lyon

Rent **

From 30 nights to 3 months maximum:
19,50€ / night

From 30 nights to 3 months maximum:
24,50€ / night

*Deposit: 450€ | Cleaning fee: 37€ ** Including: water, electricity, household tax, internet access, home insurance, linen & crockery kit

** Including: water, electricity, household waste tax, internet access, home insurance, linen & crockery kit

STUDIO - Long stay residences *

Residences

Individual studio (about 18m²)

UNIVERS STUDIO - 69100 Villeurbanne

CAMPUS PARC - 69100 Villeurbanne

LE VICTOR HUGO - 69002 Lyon

LE MICHEL-ANGE - 69007 Lyon

LES STUDIOS LUMIERE - 69008 Lyon

Rent **

Including: linen & crockery kit

560 €

Including water charges and household waste tax

Electricity meter to be opened at reservation

Cost according to consumption, average cost between 30€ and 60€.

585 €

Including water, electricity and waste tax

610 €

Including water charges and household waste tax

Electricity meter to be opened at reservation

Cost according to consumption, average cost between 30€ and 60€.

605 €

Including water, electricity and waste tax

580 €

Including water charges and household waste tax

Electricity meter to be opened at reservation

Cost according to consumption, average cost between 30€ and 60€.

*Deposit - (refunded if at the end of the stay, subject to the flat being returned in a clean and undamaged condition): 650 €

**Application Fee - (mandatory and non-refundable) (includes administrative fees, laundry access, cleaning kit, cafeteria access, reception): 350 €.

Home insurance - (to be paid on the day of arrival when signing the rental contract) : From 31 € to 50 €, depending on the duration of the stay (6 or 12 months contract)

TRANSFERS

One way

80 €

Round trip

160 €

Taxi from airport to accommodation



1 JANUARY 2023

| MON | TUE | WED | THU | FRY | SAT | SUN |
|-----|-----|-----|-----|-----|-----|-----|
| | | | | | | 1 |
| 2 | 3 | 4 | 5 | 6 | 7 | 8 |
| 9 | 10 | 11 | 12 | 13 | 14 | 15 |
| 16 | 17 | 18 | 19 | 20 | 21 | 22 |
| 23 | 24 | 25 | 26 | 27 | 28 | 29 |
| 30 | 31 | | | | | |

2 FEBRUARY 2023

| MON | TUE | WED | THU | FRY | SAT | SUN |
|-----|-----|-----|-----|-----|-----|-----|
| | | 1 | 2 | 3 | 4 | 5 |
| 6 | 7 | 8 | 9 | 10 | 11 | 12 |
| 13 | 14 | 15 | 16 | 17 | 18 | 19 |
| 20 | 21 | 22 | 23 | 24 | 25 | 26 |
| 27 | 28 | | | | | |

3 MARCH 2023

| MON | TUE | WED | THU | FRY | SAT | SUN |
|-----|-----|-----|-----|-----|-----|-----|
| | | 1 | 2 | 3 | 4 | 5 |
| 6 | 7 | 8 | 9 | 10 | 11 | 12 |
| 13 | 14 | 15 | 16 | 17 | 18 | 19 |
| 20 | 21 | 22 | 23 | 24 | 25 | |
| 27 | 28 | 29 | 30 | 31 | | |

4 APRIL 2023

| MON | TUE | WED | THU | FRY | SAT | SUN |
|-----|-----|-----|-----|-----|-----|-----|
| | | | | | 1 | 2 |
| 3 | 4 | 5 | 6 | 7 | 8 | 9 |
| 10 | 11 | 12 | 13 | 14 | 15 | 16 |
| 17 | 18 | 19 | 20 | 21 | 22 | 23 |
| 24 | 25 | 26 | 27 | 28 | 29 | 30 |

5 MAY 2023

| MON | TUE | WED | THU | FRY | SAT | SUN |
|-----|-----|-----|-----|-----|-----|-----|
| 1 | 2 | 3 | 4 | 5 | 6 | 7 |
| 8 | 9 | 10 | 11 | 12 | 13 | 14 |
| 15 | 16 | 17 | 18 | 19 | 20 | 21 |
| 22 | 23 | 24 | 25 | 26 | 27 | 28 |
| 29 | 30 | 31 | | | | |

6 JUNE 2023

| MON | TUE | WED | THU | FRY | SAT | SUN |
|-----|-----|-----|-----|-----|-----|-----|
| | | | 1 | 2 | 3 | 4 |
| 5 | 6 | 7 | 8 | 9 | 10 | 11 |
| 12 | 13 | 14 | 15 | 16 | 17 | 18 |
| 19 | 20 | 21 | 22 | 23 | 24 | 25 |
| 26 | 27 | 28 | 29 | 30 | | |

7 JULY 2023

| MON | TUE | WED | THU | FRY | SAT | SUN |
|-----|-----|-----|-----|-----|-----|-----|
| | | | | | 1 | 2 |
| 3 | 4 | 5 | 6 | 7 | 8 | 9 |
| 10 | 11 | 12 | 13 | 14 | 15 | 16 |
| 17 | 18 | 19 | 20 | 21 | 22 | 23 |
| 24 | 25 | 26 | 27 | 28 | 29 | 30 |
| 31 | | | | | | |

8 AUGUST 2023

| MON | TUE | WED | THU | FRY | SAT | SUN |
|-----|-----|-----|-----|-----|-----|-----|
| | 1 | 2 | 3 | 4 | 5 | 6 |
| 7 | 8 | 9 | 10 | 11 | 12 | 13 |
| 14 | 15 | 16 | 17 | 18 | 19 | 20 |
| 21 | 22 | 23 | 24 | 25 | 26 | 27 |
| 28 | 29 | 30 | 31 | | | |

9 SEPTEMBER 2023

| MON | TUE | WED | THU | FRY | SAT | SUN |
|-----|-----|-----|-----|-----|-----|-----|
| | | | | 1 | 2 | 3 |
| 4 | 5 | 6 | 7 | 8 | 9 | 10 |
| 11 | 12 | 13 | 14 | 15 | 16 | 17 |
| 18 | 19 | 20 | 21 | 22 | 23 | 24 |
| 25 | 26 | 27 | 28 | 29 | 30 | |

10 OCTOBER 2023

| MON | TUE | WED | THU | FRY | SAT | SUN |
|-----|-----|-----|-----|-----|-----|-----|
| | | | | | | 1 |
| 2 | 3 | 4 | 5 | 6 | 7 | 8 |
| 9 | 10 | 11 | 12 | 13 | 14 | 15 |
| 16 | 17 | 18 | 19 | 20 | 21 | |
| 23 | 24 | 25 | 26 | 27 | 28 | 29 |
| 30 | 31 | | | | | |

11 NOVEMBER 2023

| MON | TUE | WED | THU | FRY | SAT | SUN |
|-----|-----|-----|-----|-----|-----|-----|
| | | 1 | 2 | 3 | 4 | 5 |
| 6 | 7 | 8 | 9 | 10 | 11 | 12 |
| 13 | 14 | 15 | 16 | 17 | 18 | 19 |
| 20 | 21 | 22 | 23 | 24 | 25 | 26 |
| 27 | 28 | 29 | 30 | | | |

12 DECEMBER 2023

| MON | TUE | WED | THU | FRY | SAT | SUN |
|-----|-----|-----|-----|-----|-----|-----|
| | | | | 1 | 2 | 3 |
| 4 | 5 | 6 | 7 | 8 | 9 | 10 |
| 11 | 12 | 13 | 14 | 15 | 16 | 17 |
| 18 | 19 | 20 | 21 | 22 | 23 | 24 |
| 25 | 26 | 27 | 28 | 29 | 30 | 31 |

1 JANUARY 2024

| MON | TUE | WED | THU | FRY | SAT | SUN |
|-----|-----|-----|-----|-----|-----|-----|
| 1 | 2 | 3 | 4 | 5 | 6 | 7 |
| 8 | 9 | 10 | 11 | 12 | 13 | 14 |
| 15 | 16 | 17 | 18 | 19 | 20 | 21 |
| 22 | 23 | 24 | 25 | 26 | 27 | 28 |
| 29 | 30 | 31 | | | | |

- Annual closure
- Bank Holidays
- Complete beginner
- General Intensive French Semester

- Essential, standard, intensive
 - Individual French general/specific/business
 - DELFL-DALF-TCF preparation
 - Academic preparation
 - Training for French teachers
 - year-round programme (except during thematic courses)
 - Evening classes
- French and Culture
- Thematic courses (n°1)
- Thematic courses (n°2)



REMINDER OF THE GENERAL CONDITIONS OF SALE

The General Terms and Conditions are available on the school's website or on request.

Enrolment procedure:

- Registration fee: 80€ (non refundable)
- Payment of a deposit equal to 30% of total tuition is necessary to confirm a reservation.
- In case of an accommodation request, the accommodation search fees and a 150€ down payment will also be required for students living with host families.

Minimum age:

- Adult centre: 16+ years (with parental consent)
- Junior Centre: 11 to 16 years old

The price of the French course includes:

- 45 minutes

The price of the French course includes:

- Level test and initial assessment
- The teaching
- The school's Roadbook
- The teaching material
- Mobile application
- Insurance against accidents on the school site and in the context of cultural activities organised by the school
- Certificate of course participation
- Certificate of completion of the course
- Transfer service to and from the airport or train station for students who have requested homestay.

Number of students per class:

12 on average, 14 students maximum.

Organization of the timetable:

Courses in the mornings and afternoons for adults only.

Placement test:

Students must take a written placement test before their arrival and an oral placement test on the day of their arrival at the school.

The minimum level to participate in the general French courses is A1 (false beginner).

Courses for complete beginners:

Start on fixed dates: 9 January, 20 February, 6 March, 24 April, 8 May, 19 June, 3 July, 21 August, 4 September and 30 October 2023. Any complete beginner student wishing to start their course before these dates will need to purchase a 10-pack of private lessons before joining a group at their level.

Opening and closing dates of the school:

- Annual opening: from 2 January 2023 to 22 December 2023.
- Annual closing: from 23 December 2023 to 07 January 2024.

Management of public holidays:

The school will be closed for French public holidays unless otherwise stated. For students following the INTENSIVE programme over a period of 1 to 4 weeks, the school undertakes to provide the lessons lost or to replace them with an activity. For all other programmes: lessons will be replaced.

Accommodation:

Accommodation is available from Sunday to Saturday. An additional fee will be charged for arrival before Sunday or departure after Saturday.

Changes during the stay:

Possible under certain conditions. Please refer to the full General Terms and Conditions of Sale

Cancellation of stay:

Please refer to the full General Terms and Conditions of Sale. No refunds can be made after the start of the course.

Insurance:

Students must take out a health insurance policy in their own country to guarantee the reimbursement of medical expenses.

It is also recommended to take out travel insurance against loss or theft of luggage and other valuables, as well as personal liability and repatriation.

The full Terms and Conditions can be found on the school's websites.



Lyon Bleu International, une école du réseau KLF • Keep Learning French
82, rue Duguesclin 69006 Lyon - France
contact@lyon-bleu.fr - +33 437 480 026 - lyon-bleu.fr

SCHOOLS OF THE NETWORK KLF • KEEP LEARNING FRENCH

